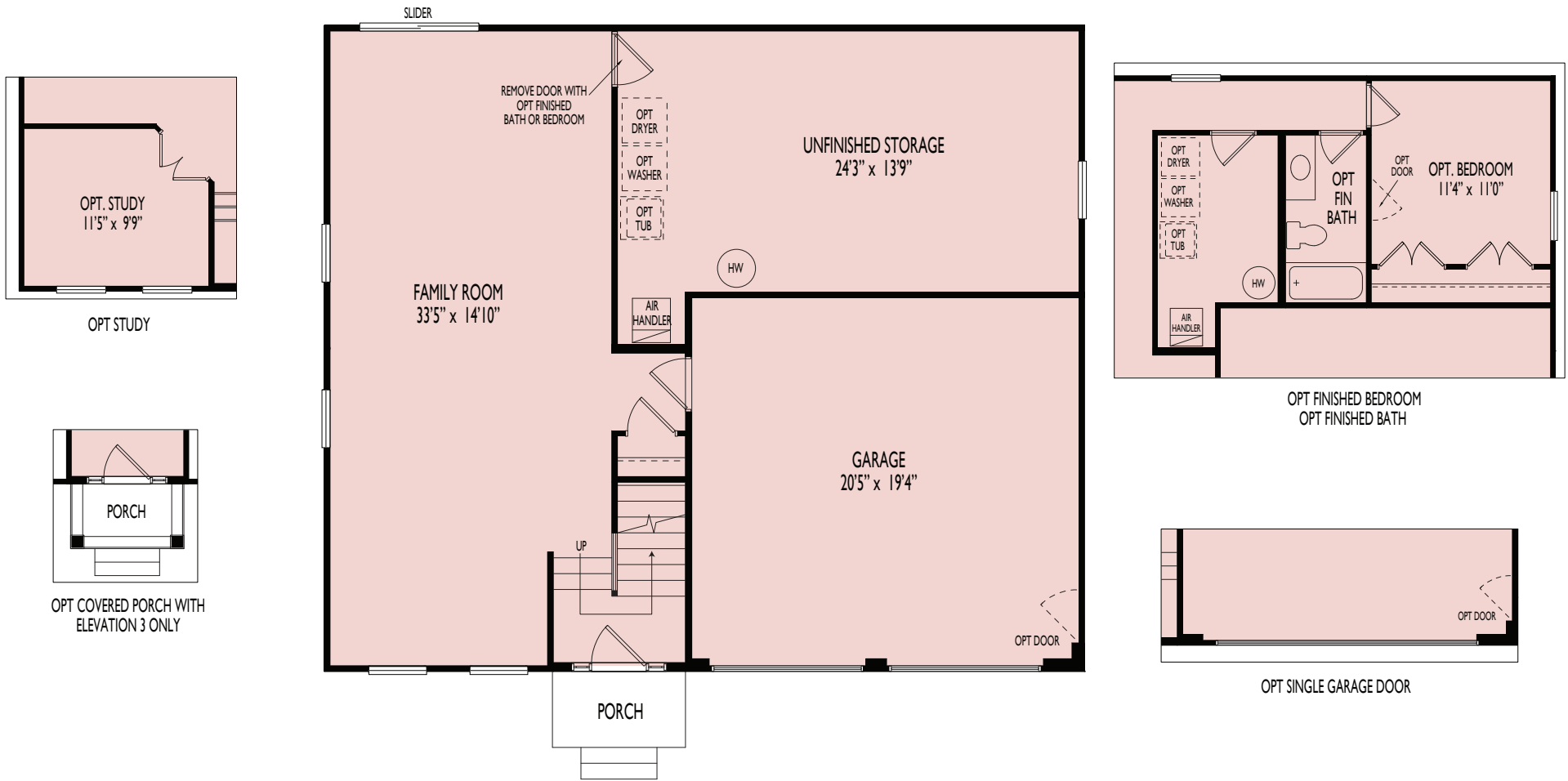


# The Oxford

---



*Elevation 1* | OPTIONS NOT SHOWN: COVERED PORCH

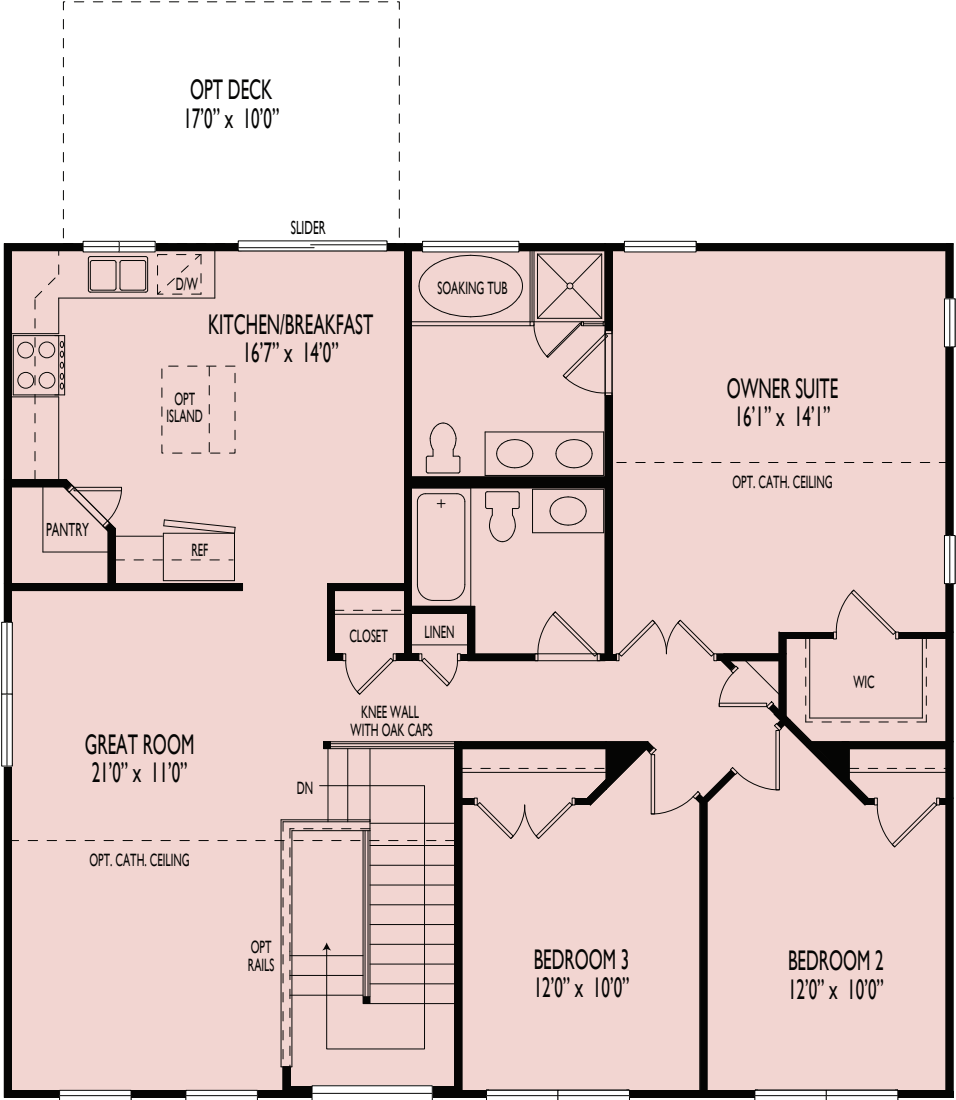


*The Oxford* | MAIN FLOOR

Floorplans and renderings are for illustrative purposes only and not part of a contract. All dimensions are approximate and subject to change. Options are shown and available at additional cost. See Sales Manager for complete information.



# The Oxford | SECOND FLOOR



46115 Thoroughbred Way  
 Lexington Park, MD 20653  
 Phone 301-863-5550  
 Fax 301-863-5554

MHBR#4558/6018

Floorplans and renderings are for illustrative purposes only and not part of a contract. All dimensions are approximate and subject to change. Options are shown and available at additional cost. See Sales Manager for complete information.

